

05/07/21
Monday

Date

Page No.

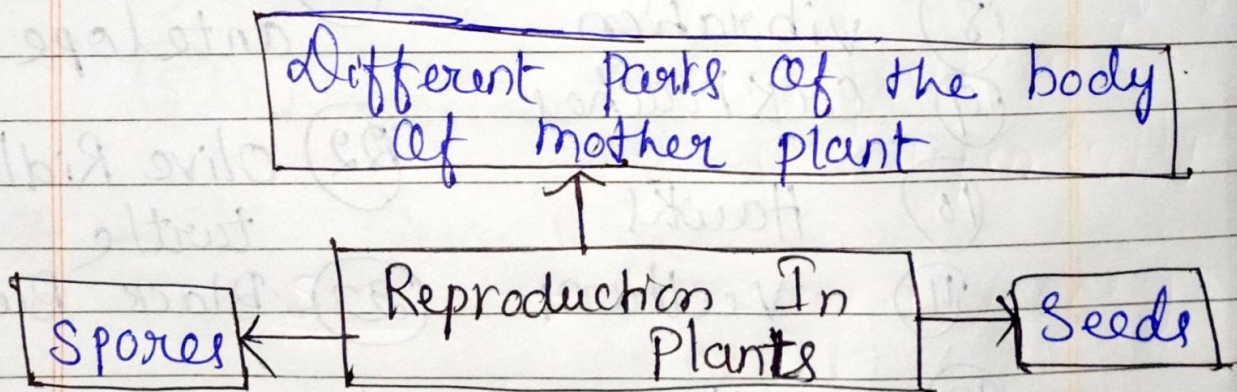
1

6. Growing Plants

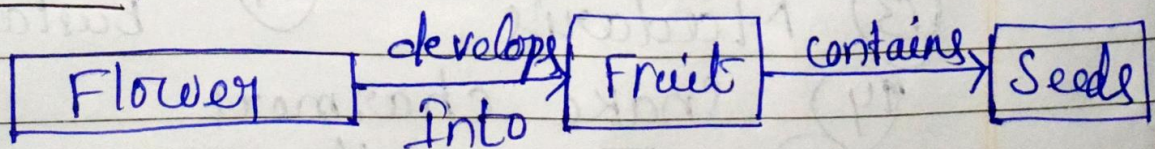
Reproduction:

- * The process of producing young ones of the same kind is called reproduction.
- * All living things need to reproduce so that their own kind does not die out.

Different ways Of Reproduction:



Seeds:



* Fruits may have only one seed

example: Mango

* Some fruits have many seeds,
example: watermelon

* Most plants grow from seeds
example: wheat, Rice.

Spores:

* A spore is a tiny single cell that helps in plant reproduction.

* Some plants do not have seeds, these plants reproduce with the help of spores.

example: Fern, Mosses

do not bear
flowers.

Body Parts: * Some plants reproduce from parts such as roots, leaves and stems.

* This type of reproduction is called vegetative propagation

Reproduction from Different Body parts Example

① Roots → potato, onion, Carrot and ginger, Radish plant

② Leaf → Bryophyllum
↓
It grows from the edges of the leaf of mother plant and grows independently.

③ Stem → Rose and money plant

Structure of a Seed:

Seed coat:

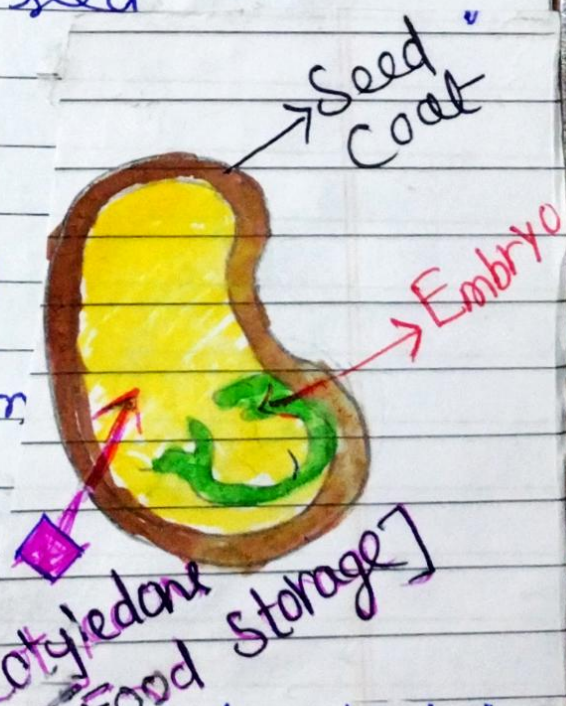
- * It is the hard outer covering of the seed
- * It protects the seed

Embryo:

- * It is the tiny Baby plant inside the seed
- * Seedling grows from it

Cotyledons:

Food is stored in special seed leaves called cotyledons as embryo needs food



Germination



Germination :

The process by which a seed grows into a seedling, or baby plant is called germination.

Steps :

① The seed absorbs water

* So in this step the embryo gets help to divide and grow bigger.

② Seed coat splits

* As the seed grows bigger, its seed coat bursts open/splits

③ Embryo root grows to get water

* A tiny root, called radicle, comes out and grows downwards into the soil.

④ Embryo stem grows

* A tiny shoot called plumule grows upwards, towards sunlight

⑤ Leaves grow on the stem

* The plumule grows into the stem and leaves [Foliage leaves] of the new plants.

⑥ Now the seedling or baby plant can make photosynthesis process to grow into an adult plant.

