

07/02/22  
Monday

Date \_\_\_\_\_  
Page \_\_\_\_\_

## Practice Test - 4 [Ch - 18]

(A) Match the following:

- |                    |                            |
|--------------------|----------------------------|
| (1) Earth          | (a) Depend on rainfall (3) |
| (2) Snow-fed river | (b) Dyke (4)               |
| (3) Rain-fed river | (c) Artificial lake (5)    |
| (4) Salt extracted | (d) Blue planet (1)        |
| (5) Reservoir      | (e) Ganga (2)              |

(B) Name them:

- (1) A channel taken out from a river or reservoir — Canal
- (2) An artificial lake constructed behind a dam — reservoir
- (3) A high wall built along the seashore — dyke

Date \_\_\_\_\_  
Page \_\_\_\_\_

(4) A river of ice ~~glacier~~ glacier

(5) The process takes place due to heating Evaporation

(C) Answer the following

- (1) write the different ways we store and conserve water.
- (2) why rain-fed rivers almost dry up during the summers.
- (3) what is <sup>the</sup> use of dyke?
- (4) why snow-fed rivers carry water throughout the year [2 Marks]
- (5) write the <sup>names of</sup> Inland water sources.

[Learn the practice Test [Ch-18] already done in class]

\*TRY to remember the pictures of Ch-97 [Canal, Reservoir and dam] for exam

Q Answer the following [Ch-18] → Answer:

[Practice Test - 4]

① We can store and conserve water  
By building

→ dams

→ reservoirs

→ canals.

② Rain-fed rivers dry up during  
summers as they depend on rainfall  
for water. So carry water only  
during the rainy season.

③ Dykes prevent the water from  
flowing back to the sea so that  
salt can be extracted from  
seawater.

④ Snow-fed rivers carry water  
throughout the year as [they get  
the water from the melting of snow  
[during summer]. And during rainy  
season due to rainfall they carry  
water]

⑤ The name of inland water sources  
are lakes, ponds, rivers

## Creative Thinking Questions [4 Marks]

- ① Who are the people who contribute in the making of a house? Name the tools used by each of them. [Ch-22]
- ② Which human activities pollute the river, what can you do to prevent the water bodies? [Ch-19]
- ③ How is salt extracted from seawater? [Ch-18]

Ans: \* Seashore cut off from the sea by constructing dykes.

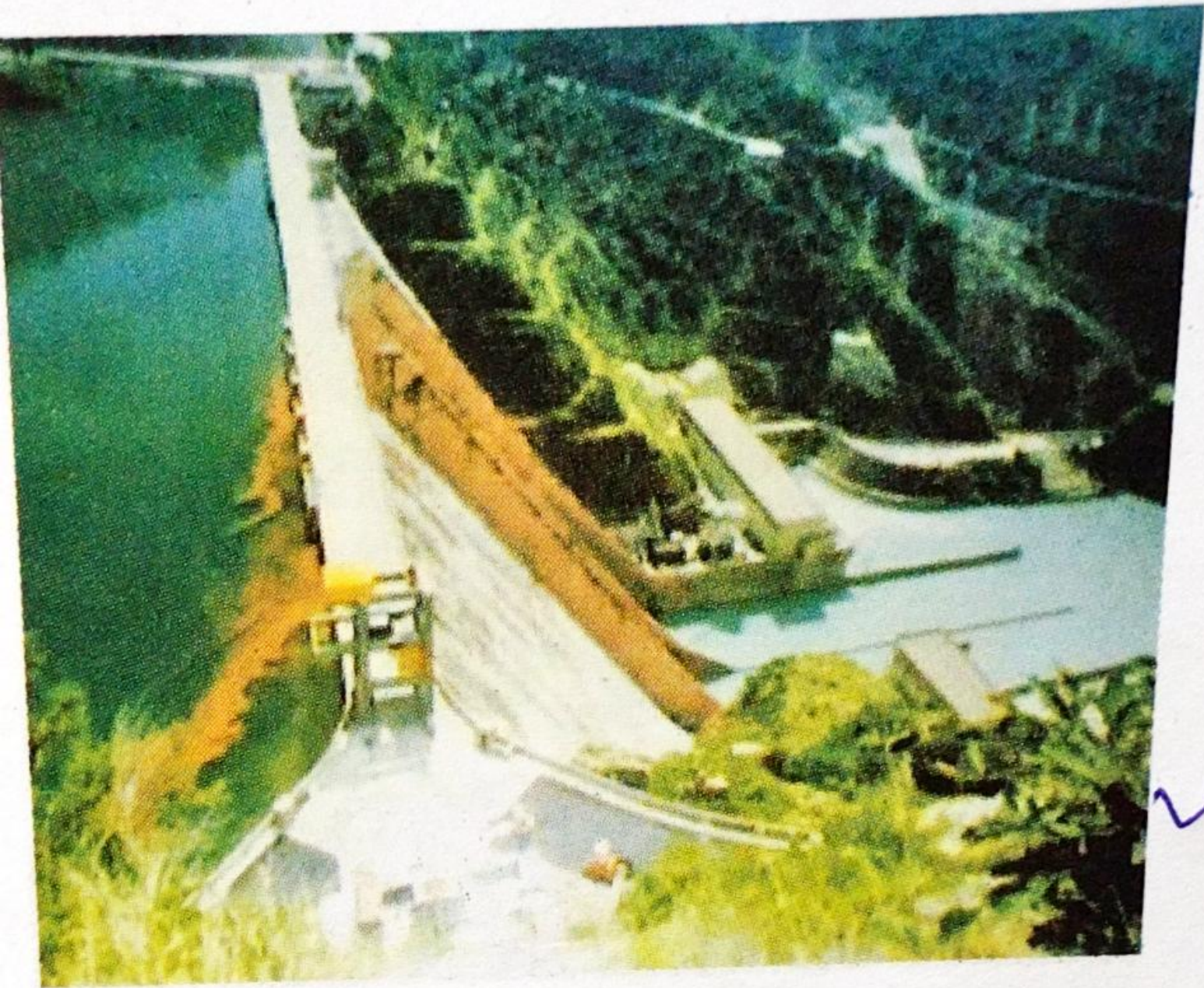
\* The areas are called salt pan

\* The water in the salt pans evaporates

\* The layer of salt is left behind

\* This salt is collected and sent to factories for refining.

④ How can you reduce the use of polythene bag and such non-degradable materials? [like plastic] [ch-19]



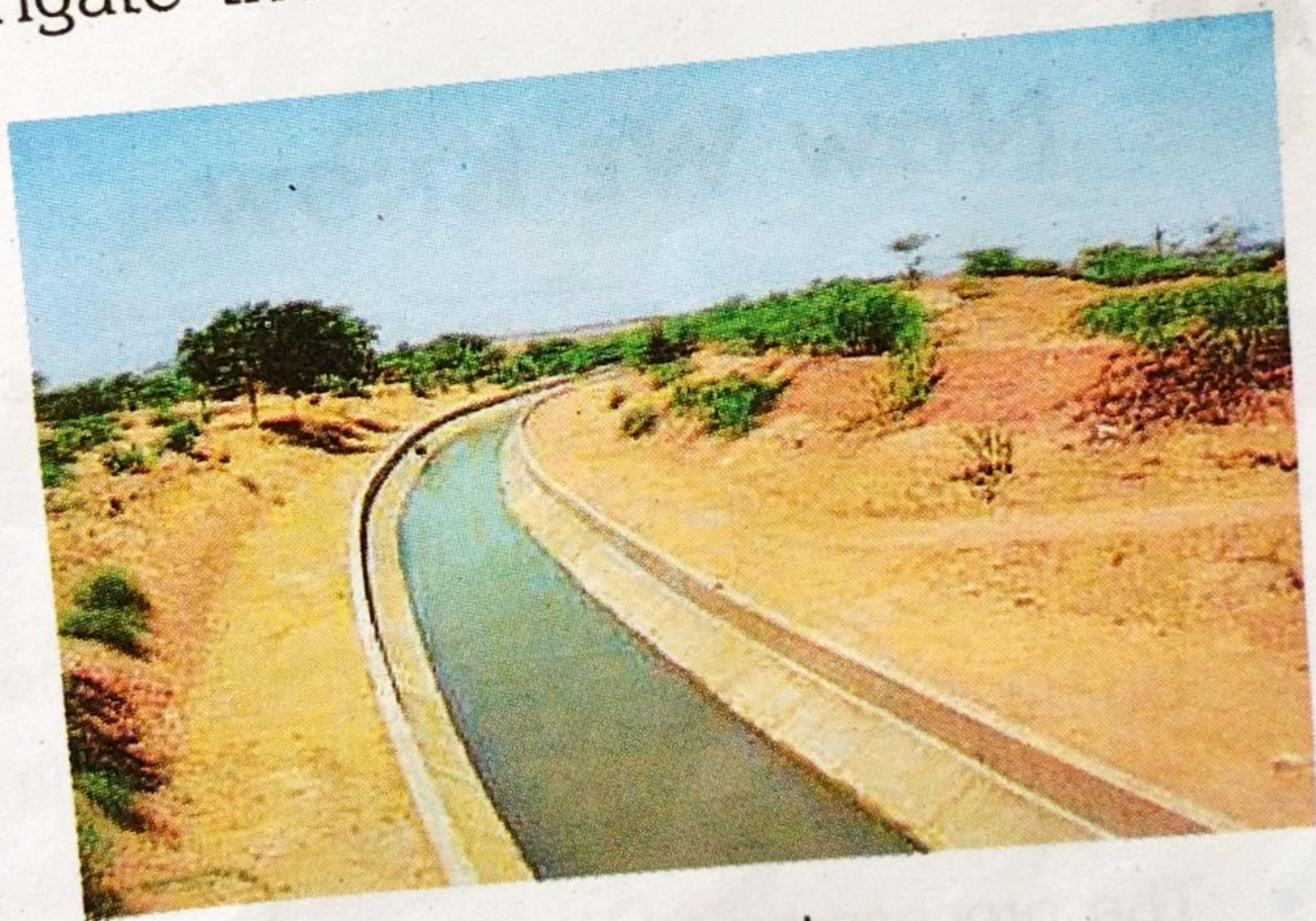
A dam and a reservoir

This water is

used for various activities.

## Canal

A canal is a channel taken out from a river or a reservoir. It is used to irrigate the fields.



A canal